

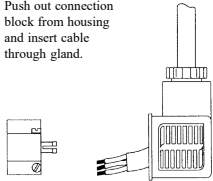
Installation and Maintenance - Product C15, 'P' Series

Electrical Connections

Electrical connections vary depending on the coil type fitted to the valve. The principal alternatives are either Plug and Socket or Conduit Entry.

Plug and Socket Coils

Push out connection block from housing and insert cable through gland.



Electrical connections are made to terminals 1, 2 and earth if necessary. When a surge suppression diode has been fitted ensure that terminal 1 is positive and terminal 2 is negative.



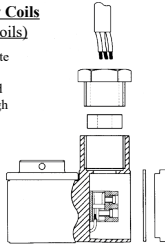
Top view without Surge suppression diode.



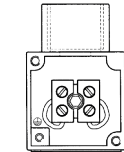
Top view with Surge suppression diode.

Conduit Entry Coils (terminal box coils)

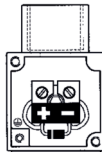
Remove cover plate to allow access to terminal block and insert cable through gland and bush.



Electrical connections are made to the two terminals and earth if necessary. When a surge suppression diode has been fitted the terminals will be polarity sensitive. Ensure correct connection.



Top view without Surge suppression diode.



Top view with Surge suppression diode.

powerite
division of Kinetrrol Ltd

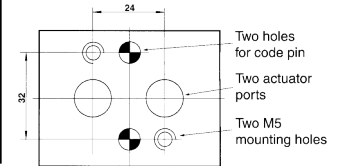
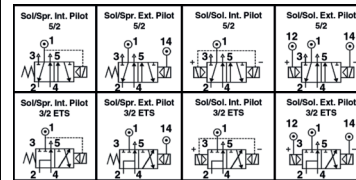
ROSS
a global family

pneumatrol

Part codes	Description
C1518P****	Solenoid / Spring, Internally Piloted
C1580P****	Solenoid / Spring, Externally Piloted
C1519P****	Solenoid / Solenoid, Internally Piloted
C1590P****	Solenoid / Solenoid, Externally Piloted

Installation

The NAMUR interface allows the valve to be mounted directly on to pneumatically operated valve actuators meeting the NAMUR standard fixing dimensions, without the need for special piping or bracketing. A code pin (fitted to the actuator) ensures that the valve will always be mounted correctly.



Air supply requirements

Filtration & Lubrication

The supply air shall be clean, dry and free from water, moisture, foreign parts and debris. It is recommended that a <40µm filter/regulator be installed as close to the valve as possible to ensure proper supply air quality. The air supply can be either lubricated or non-lubricated. In the case of lubricated air being used, the recommended oil types are ISO and UNI FD22 (Energol HPL ~ Spinesso ~ Mobil DTE ~ Telles Oil).

Air Pressure Range Table

	Internal Pilot Sol. / Spring	External Pilot Sol. / Spring	Internal Pilot Sol. / Sol.	External Pilot Sol. / Sol.
	Working Pressure (p.s.i.)	45 to 120	0 to 120	22 to 120
Working Pressure (Bar)	3 to 8	0 to 8	1.5 to 8	0 to 8
Min. Pilot Pressure (p.s.i.)	N/A	45	N/A	22
Min. Pilot Pressure (bar)	N/A	3	N/A	1.5

Connections

Pneumatic Connections

The mains air connection is tapped for G1/4 or 1/4"NPT male connectors and is clearly marked with a number 1. The two exhaust ports are tapped for G1/8 or 1/8"NPT male connectors and are marked with numbers 3 and 5.

(See pneumatic symbols at top of page.)

Note that if ports are tapped NPT then the body will be stamped with 'NPT' to identify this variation.

Electrical Connections

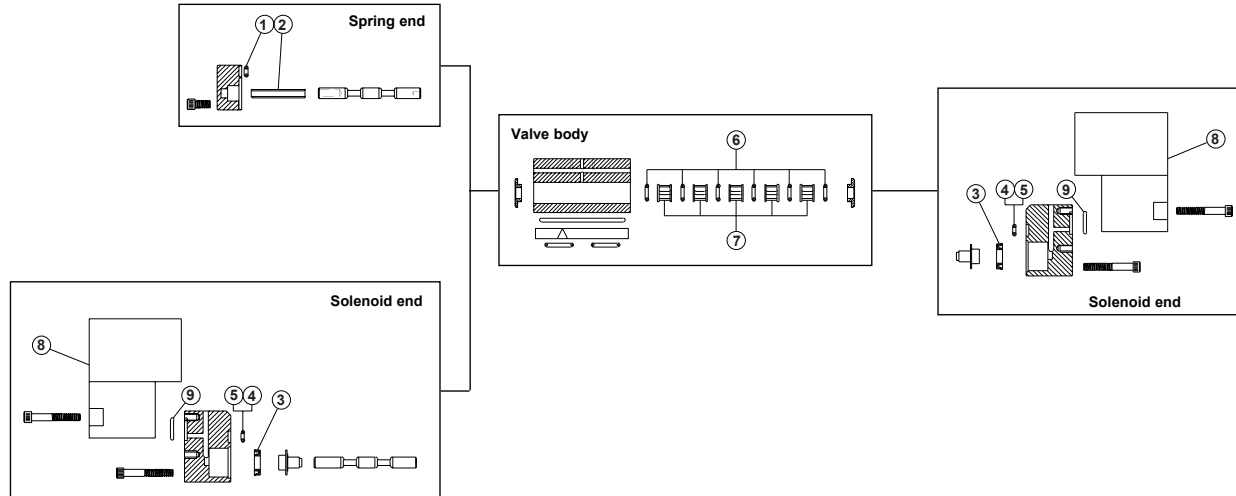
For electrical connection details and information please refer to the back of this sheet.

Spares Information - Product C15, 'P' Series

ROSS
a global family

pneumatrol

powerite
division of Kinetrol Ltd



Item 8						
Safe area coil assemblies			Hazardous area coil assemblies			
Coil type	Voltage	Part code	Coil type	Voltage	Part code	
Terminal Box	24v DC	E13AXRB00B	EExia	24v DC	E13AXRA00B	
	110v AC	E13AXRB00T		EExd	24v DC	E13AXRD00B
	240v AC	E13AXRB00U			110v AC	E13AXRD00T
		240v AC	E13AXRD00U			
MC30	24v DC	E13AXRK00B	EExm	24v DC	E13AXR900B	
	110v AC	E13AXRK00T		110v AC	E13AXR900T	
	240v AC	E13AXRK00U		240v AC	E13AXR900U	
Plug & Socket	24v DC	E13AXRP00B	ExN	24v DC	E13AXRN00B	
	110v AC	E13AXRP00T		110v AC	E13AXRN00T	
	240v AC	E13AXRP00U		240v AC	E13AXRN00U	

Spares parts kit	Consisting of	Item	Quantity
VSKC15P	Seal	1	1
	Spring	2	1
	Cup seal	3	2
	Seal*	4	2
	Blanking Disc*	5	2
	Seal	6	6
	Spacer	7	5
	Gasket	9	2

Note 1: Not all parts are required for each individual valve.

Note 2:*

Item 4 is used for internally piloted valves.

Item 5 is used for externally piloted valves.