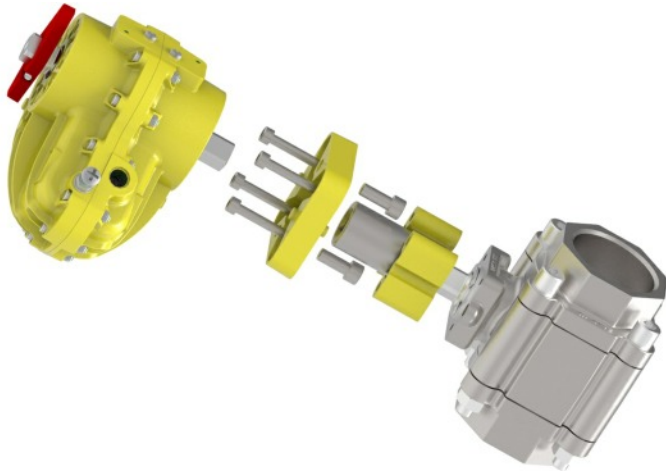


# Kinetrol Model 05 and 07 Extrusion Spacer Mount Kit

Kinetrol's extrusion spacer mounting kits are available for Model 05 and 07 double acting and spring return actuators. The design allows a cost-effective, flexible approach to traditional mounting kits, consisting of three parts which can be purchased individually on a mix and match basis.



- Allows mounting to valves with tapped holes and fewer screws
- Mounting holes are more accessible
- F05 and F07 extrusion spacers
- Extrusion spacers can be cut to optimal length for the application

**Adaptor Plate** - single diecast plate fits Models 05 and 07 actuators

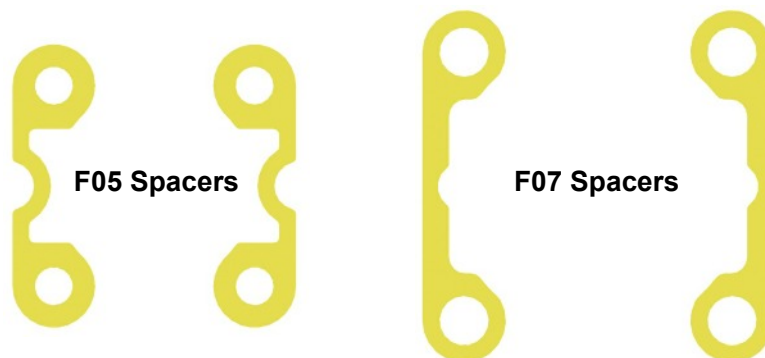
**Extrusion Spacers** - are supplied (epoxy painted) as a pair and can be cut to any length between a 2mm minimum and a maximum as shown in the table below. The extrusions will come with screws which will match as closely as possible to the length of the extrusion (customers may need to modify the screw length in some cases).

## Maximum Extruder Spacer Length (mm)

Double Acting	Model 05	Model 07
F05	154	63
F07	256	105

Spring Return	Model 05	Model 07
F05	308	126
F07	512	210

## Spacer Profiles



**Couplings** - Kinetrol also offer the standard Model 05 and 07 couplings with three bi-square options, 17mm, 14mm and 11mm.

# Kinetrol Model 05 and 07 Extrusion Spacer Mount Kit

## Ordering Codes

Spacers and Couplings -	SP1390	Model 05 / 07 Adaptor Plate
	ASP1390	Model 05 /07 Ansi Adaptor Plate
	SP1391-17	Model 05 Coupling with 17mm Bi-square
	SP1391-14	Model 05 Coupling with 14mm Bi-square
	SP1391-11	Model 05 Coupling with 11mm Bi-square
	SP1392-17	Model 07 Coupling with 17mm Bi-square
	SP1392-14	Model 07 Coupling with 14mm Bi-square
	SP1392-11	Model 07 Coupling with 11mm Bi-square

Extrusion Spacers - As these can be ordered at any length, the length becomes part of the code.

100-F05-??? (length in mm)

100-F07-??? (length in mm)

Example 1: F05 extrusion spacer 6 mm long = 100-F05-006

Example 2: F07 extrusion spacer 12 mm long = 100-F07-012

To order an Ansi painted extrusion spacer add A to the end of the code.

Example 3: F05 Ansi extrusion spacer 6 mm long = 100-F05-006A

**Important: All extrusion dimensions including Ansi units must be in mm.**

## SP1390 / ASP1390

